



JRS2-12.5/Z



JRS2-25/Z



JRS2-32/Z



JRS2-45/Z



JRS2-63/F

使用范围Application

JRS2(3UA)系列热继电器适用于交流50/60Hz, 电压至690-1000V, 电流至630A的长期工作或间断长期工作的一般交流电动机的过载与断相保护, 具有断相保护, 温度补偿, 脱扣指示功能, 并能自动与手动复位, 可与接触器接插安装, 也可独立安装。本产品符合GB14048.4, IEC60947-4, VDE0660标准。

JRS2(3UA) thermal relay is suitable for AC 50/60Hz.voltage up to 690-1000V and current up to 630A.general AC motor of long or discontinuous long operation, and trip indication. It can automatically and manually get back.phase protection, temperature compensation, and trip indication. It can automatically and manually get back.It can be fixed with contactor together, also be independtly fixed. The product conforms to GB 14048.4,IEC60947-4 & VDE0660 stardands.

型号及其含义Type And Meaning

JRS2 - □ / □

- Z:组合安装式 Combined installation
- F:独立安装式 Independtly installation
- 品种代号: 以额定电流表示
- Kinds code: Expression for rated current

动作特性:三相负载平衡时的动作时间

Motion Characteracteristic:Three-Phase Balance Motion Time

序号 NO	额定电流倍数 Times the setting current	动作时间 Motion time			起始条件 Start condition	环境温度 Ambient temperature
1	1.05	> 2h			冷态cold state 热态heat state (接序号1试验后 Following the No.1test)	20 ± 5°C
2	1.2	< 2h				
3	1.5	< 4min				
4	7.2	10A	2s < Tp ≤ 10s	≤ 63A	冷态cold state	
		10	4s < Tp ≤ 10s	> 63A		

断相动作性能 Phase-Losing Motion Characteristic

序号NO	额定电流倍数Times the setting current		动作时间 Motion time	起始条件 Start condition	环境温度 Ambient temperature
	任意二相Any two phase	第三相Another phase			
1	1.0	0.9	> 2h	冷态cold state	20 ± 5°C
2	1.15	0	< 2h	热态heat state (接序号1试验后 Following the No.1test)	

规格 specifications

型号 Type	编号 Number	整定电流范围(A) Setting range(A)	相配接触器型号 For contactor	型号 Type	编号 Number	整定电流范围(A) Setting range(A)	相配接触器型号 For contactor
JRS2-12/Z	0A	0.1~0.16	CJX1-9 CJX1-12	JRS2-25/Z	0A	0.1~0.16	CJX1-16 CJX1-22
	0C	0.16~0.25			0C	0.16~0.25	
	0E	0.25~0.4			0E	0.25~0.4	
	0G	0.4~0.63			0G	0.4~0.63	
	0J	0.63~1			0J	0.63~1	
	0K	0.8~1.25			0K	0.8~1.25	
	1A	1~1.6			1A	1~1.6	
	1B	1.25~2			1B	1.25~2	
	1C	1.6~2.5			1C	1.6~2.5	
	1D	2~3.2			1D	2~3.2	
	1E	2.5~4			1E	2.5~4	
	1F	3.2~5			1F	3.2~5	
	1G	4~6.3			1G	4~6.3	
	1H	5~8			1H	5~8	
	1J	6.3~10			1J	6.3~10	
	1K	8~12.5			1K	8~12.5	
2S	10~14.5	2A	10~16				
		2B	12.5~20				
		2C	16~25				

JRS2(3UA)系列热继电器

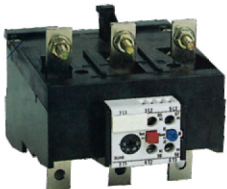
JRS2(3UA) SERIES DC THERMAL RELAY



JRS2-80/Z



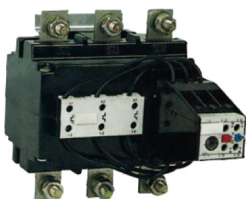
JRS2-135/F



JRS2-150/F



JRS2-180/F



JRS2-400/F

-630/F

型号 Type	编号 Number	整定电流范围(A) Setting range(A)	相配接触器型号 For contactor
JRS2-32/Z	1G	4~6.3	CJX1-32
	1J	6.3~10	
	2A	10~16	
	2B	12.5~20	
	2C	16~25	
	2D	20~32	
	2Q	25~36	
	0A	0.1~0.16	
	0V	0.16~0.25	
	0E	0.25~0.4	
JRS2-45/Z	0G	0.4~0.63	CJX1-32 CJX1-38F CJX1-38
	0J	0.63~1	
	0K	0.8~1.25	
	1A	1~1.6	
	1B	1.25~2	
	1C	1.6~2.5	
	1D	2~3.2	
	1E	2.5~4	
	1F	3.2~5	
	1G	4~6.3	
	1H	5~8	
	1J	6.3~10	
	1K	8~12.5	
	2A	10~16	
	2B	12.5~20	
	2C	16~25	
	2D	20~32	
	2Q	25~36	
	2R	32~40	
	JRS2-80/Z	8M	
1G		4~6.3	
8A		11~17	
2B		12.5~20	
2C		16~25	
2D		20~32	
2E		25~40	
2F		32~50	
2T		40~57	
2P		50~63	
2V		57~70	
2U		63~80	
8W		70~88	
JRS2-63/F		0A	0.1~0.16
	0C	0.16~0.25	
	0E	0.25~0.4	
	0G	0.4~0.63	
	0J	0.63~1	

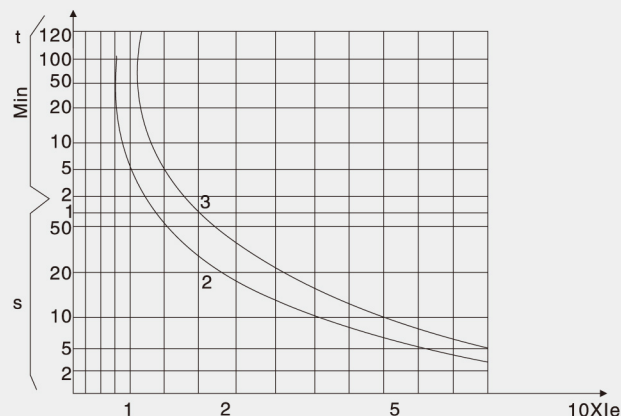
型号 Type	编号 Number	整定电流范围(A) Setting range(A)	相配接触器型号 For contactor		
JRS2-63/F	0K	0.8~1.25	CJX1-9 CJX1-63		
	1A	1~1.6			
	1B	1.25~2			
	1C	1.6~2.5			
	1D	2~3.2			
	1E	2.5~4			
	1F	3.2~5			
	1G	4~6.3			
	1H	5~8			
	1J	6.3~10			
	1K	8~12.5			
	2A	10~16			
	2B	12.5~20			
	2C	16~25			
	2D	20~32			
	JRS2-135	2E		25~40	CJX1-140
		2M		32~45	
2T		40~57			
2P		50~63			
2H		55~80			
2W		63~90			
2X		80~110			
JRS2-150	3H	90~120	CJX1-110 CJX1-170		
	3J	110~135			
	2H	55~80			
	2W	63~90			
	2X	80~110			
	3H	90~120			
	3J	110~135			
JRS2-180/F	3K	120~150	CJX1-250 CJX1-400		
	3L	135~160			
	3M	150~180			
	2K	80~125			
	3B	125~200			
	3C	160~250			
	3D	200~320			
JRS2-400	3E	250~400	CJX1-400 CJX1-475		
	3F	320~500			
	3G	400~630			

独立安装，与接触器相配时须用导线。

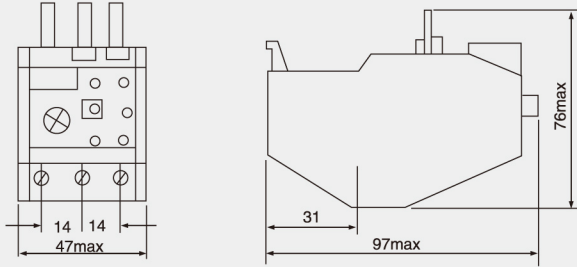
脱扣特征 Trip Characteristic

热继电器的手动复位时间应不大于2min，额定电流63A及以下，自动复位时间不大于5min，额定电流大于63A，自动复位时间不大于8min

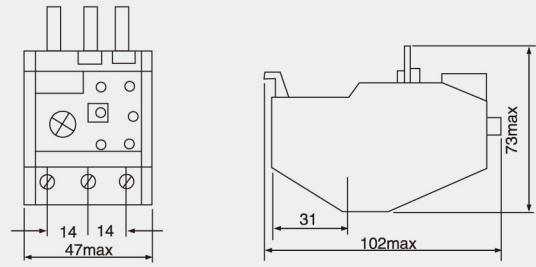
Thermal relay manual reset time is ≤ 2 min or blow auto reset time is ≤ 5 min (Rated current ≤ 63 A) or ≤ 8 min (Rated current > 63 A)



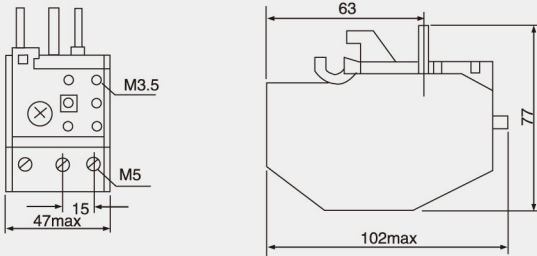
外形及安装尺寸 Outline & Mounting Size



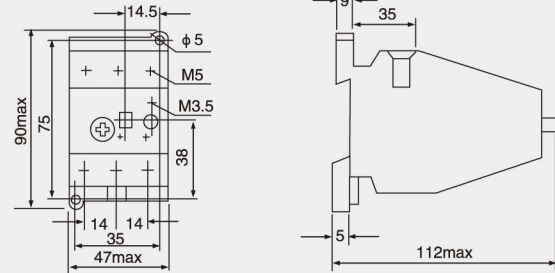
JRS2-12.5型



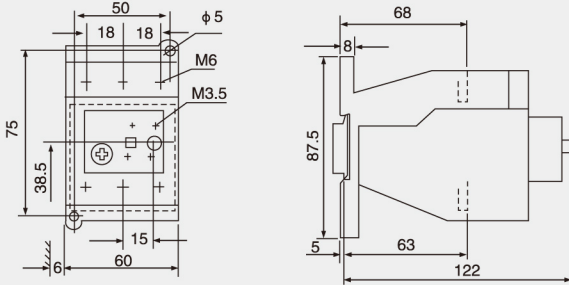
JRS2-25型



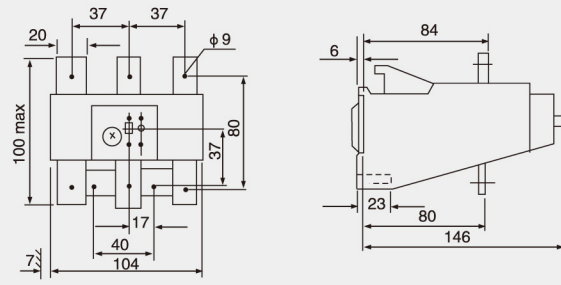
JRS2-32型



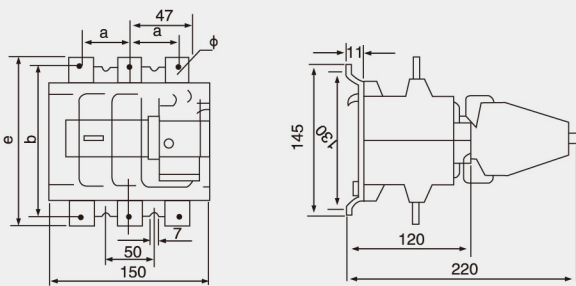
JRS2-63型



JRS2-80型



JRS2-180型



JRS2-400-630型

型号Type	JRS2-400	JRS2-630
a	50	52
b	146	156
c	70	71
φ	11	11
e	171	186
f	25 × 4	30 × 5